



## Message

Westfort Hi-tech Hospital Limited is a venture to make available the best high technology health care to the people of Kerala as well as outside Kerala. These facilities have been already created and are functioning with utmost satisfaction of all our patients.

Health problems and illness are not static. They change from place to place and time to time presenting new challenges to medical professionals. This is mainly due to increase in life expectancy, change in life style and inevitable exposure to pollutants in our environment.

Tertiary Medical care is not an individual effort but a combined work of all medical and paramedical and auxiliary technical personnel. Our objective is to have such teams trained and deploy them in each speciality areas.

Westfort Hi-tech Hospital Limited is serving as a tertiary care reference centre not only for local persons from Kerala but also for large number of people living and working in the remote areas.

It attracts and impresses everyone through the excellent services being rendered by our doctors and other medical and paramedical staff.

While specialist hospitals do exist in Kerala, there are very few hospitals providing tertiary care in its fullest sense. It is to make up this painful deficiency that Westfort Hi-tech Hospital limited was established. The philosophy of the hospital is advanced tertiary medical care using the state-of-the art technology with a human face, at an affordable cost. Medical miracles of reviving patients from morbid conditions has happened in this hospital. It is our belief that we have blazed a trail which others will follow.

(K.M. Mohandas)  
Managing Director



## Thrissur

Thrissur is the Cultural Capital of Kerala with famous pilgrimage places around it and harbour academic activities of literature, fine arts, music and dance.

Kerala's own traditional recipes for healthy living, relaxation and rejuvenation involving indigenous procedures like Pizhichil and Navarakkizhi are in full bloom in the region. Thrissur attracts many foreign tourists because of its stately elephants and the Great Elephant March held annually is a sure draw. Westfort Hi-Tech Hospital the ultra modern sophisticated hospital with all its clinical specialities will be a landmark in the area of Health Tourism. People will come here to enjoy and benefit from the harmonious blend of the best and the latest of high tech medicine and the eternal allure of Ayurveda.

## Health Facilities in Kerala & Medical Tourism

In areas like cardiac disorders, stroke management, accident & critical illness, diagnosis and treatment require the introduction of high technology with the use of complex, sophisticated and costly equipments and procedures. There is, then an increasing demand for state of the art facilities to be provided so that patients get the best treatment and care at affordable expenditure, without diminution of quality, in their own neighbourhood.

Kerala offers World Class Medical Facilities, comparable with any of the western countries. It has state of the art Hospitals and the best qualified doctors. With the best infrastructure, the best possible Medical facilities, accompanied with the most competitive prices, one can get the best quality treatment done in Kerala at the lowest charges.





### Westfort Hi-tech Hospital Ltd

Westfort Hi-Tech Hospital is the only untramodern sophisticated hospital with all clinical specialities and superspecialities in Thrissur. Since its inception in 2002, it provides high quality tertiary medical care to all the needy patients in this part of the country with excellent professional expertise and state of art medical facilities. The unique

features of the hospital are speedy and satisfactory health care under a single roof, experienced consultants, high quality nursing care, paramedical staff who provide healthcare with a human touch, excellent hospitalisation facilities, the latest state of the art medical equipments and above all the most economical prices at a very affordable cost for the common man.

Westfort Hi-Tech hospital is a tertiary care referral center not only for local patients but also for the large number of persons from Kerala living and working in the Gulf Countries. It also attracts foreign patients impressed by the excellent service being rendered.





### Specialities

- Cardiology • Cardiothoracic Surgery • Neurology
- Neurosurgery • Accident, Emergency & Trauma care • Joint Replacement, Arthroscopy & Sports Medicine • Nephrology • Urology • Medical Gastroenterology • Surgical Gastroenterology • Chest & Respiratory Medicine • Medical Oncology • Surgical Oncology • Nuclear Medicine • Plastic Surgery, Microvascular & Cosmetic Surgery • Pain & Palliative Medicine • General Medicine • Diabetology • General Surgery & Laproscopic Surgery • Obstetrics & Gynaecology • Infertility & Foetal Medicine • Paediatrics & Neonatology • Orthopaedics & Trauma Care • ENT • Dental & Maxillofacial Surgery • Ophthalmology • Psychiatry & Child Counselling • Dermatology • Physical Medicine & Rehabilitation • Radiology • Anaesthesia • Pathology & Micro Biology

### Our Special Clinics

- Diabetic Clinic • Kidney Stone Clinic • Allergy & Asthma Clinic • TB Clinic • Thyroid Clinic • Pain Clinic • Snoring & Sleep Apnoea Clinic • Child Guidance Clinic • Respiratory Rehabilitation Clinic • Smoking Cessation Clinic

### Hope (Health Options for People everywhere)

- Our Unique Comprehensive Health Check up Packages
- Magnum Health Plan • Master Health Plan
- Max Health Plan • Mini health Plan

### Attractive Health Insurance Schemes

- We accept all mediclaim insurance cards for cashless treatment including
- TTK Health Care • Family Health Plan
- Medi Assist • Paramount • Bajaj Allianz





## Cardiothoracic Surgery

Our Cardiothoracic Surgery Operating Theatre is fully equipped to tackle all surgical emergencies and has all state of the art equipments including intra-Aortic Balloon pump and fully invasive Monitoring facilities.

### Our Special procedures

Coronary Artery Bypass Grafting, including off-pump CABG on beating heart and total arterial revascularisation • Valve replacements and repairs  
 Closure of Atrial Septal Defects • Surgery for Patent Ductus Arteriosus  
 Closed Mitral Valvotomies • Lung surgery like decortication, lobectomies and pneumonectomies • Surgery for mediastinal tumours, including thymectomies for myasthenia gravis • Vascular reconstructive surgery for peripheral vascular disease and aneurysms



## Cardiology

With an excellent 10 bedded acute coronary care unit with all modern concepts and the latest state of the art Cardiac Cath lab from Seimens, Germany Axiom Artis, Westfort Hi-Tech Hospital provides comprehensive cardiac care. All coronary interventions including Primary Angioplasty are planned at reasonable costs. A wing for Preventive Cardiology will be an added attraction. We perform the following procedures in our state of art Cathlab, round the clock.

- Diagnostic Angiogram • Balloon Angioplasty • Primary & rescue angioplasty
- Noncoronary interventions • Implantable Cardioverter defibrillator • balloon Valvuloplastics • Device Closures • Pacemaker implantation

### Special Investigation

- Transeophageal echo • Dobutamine stress echo
- Exercise stress test (TMT) • Ambulatory ECG Monitoring • Nuclear cardiac SPECT.



## Pulmonology

This department is equipped with all modern facilities including :

- Polysomnography (Sleep Study)
- Ventilation Perfusion Scan (V/Q)
- Invasive & Non-invasive Ventilators

Apart from routine Chest clinic we have following speciality clinics

### Allergy Asthma Clinic

- Allergy skin Test (for allergic rhinitis & asthma)
- Immunotherapy

- Smoking Cessation Clinic
- Respiratory Rehabilitation Clinic for end stage lung diseases - chronic asthma, COPD, ILD, Bronchiectasis etc.
- TB Clinic - Specialty clinic for childhood & adult pulmonology & extra pulmonology TB
- Noring & Sleep apnoea Cline

Special thoracic procedures :

- Thoracocentesis (USG guided)
- Pleural Biopsy
- Tube Thoracostomy (Pneumothorax, Empyema etc)
- Lung Biopsy
- Pleurodesis (for malignant pleural effusion)
- Fiberoptic Bronchoscopy & Procedures.
- Pulmonology function test.





## Orthopaedics

The department can cater to large number of accident victims at a time. The department is equipped with most modern operation theatres having pneumatic and electrical drills, operating microscope, Image Intensifier, Electro cautery, arthroscope etc. All the modern Orthopaedic implants and operating sets are available. We undertake closed and open fixation of fractures, External fixations etc.

Arthroscopy Surgeries for trauma and other problems are done routinely. Major Orthopaedic procedures like laminectomy, spinal fusions, spinal decompression are undertaken. Reconstructive Orthopaedic procedures for polio, cerebral palsy, limb lengthening and major joint replacements of hip and knee area also done routinely.

## ENT

Department is fully equipped with :

- All routine ENT surgical facilities
- Operating Microscope
- Microear surgery equipments
- Bronchoscopy and oesophagoscopy facilities
- Microlaryngeal surgical facilities
- Flexible fiberoptic bronchoscopy
- FESS (Functional Endoscopic Sinus Surgery)
- Routine outpatients department work done on all days.





### Plastic and Microvascular Surgery

At the age of fifty we may get a face we deserve ? But now at age of twenty, one could get a face one desires at our Westfort Hi-Tech Hospital Ltd.

The precision work of the department is assisted by LEICA operating Microscope and other sophisticated instruments. Our ultramodern microvascular surgery units provide Cosmetic surgery, Head & Neck surgery, Hand surgery & trauma care.

### Obstetrics, Gynaecology & Foetal Medicine

This department has ultrasonographic facility in the OP apart from the antenatal clinic. Infertility workshop and special investigations are done routinely.

#### Labour Room

Well equipped and air conditioned. Electronic foetal heart monitoring and tococardiography facilities are available to monitor high risk pregnancies. Painless labour (Obstetric Analgesia) is routinely provided.

The department undertakes the following advanced procedures

- Laparoscopic Surgery - uterine, ovarian and tubal procedures
- Diagnostic Hysteroscopy and Colposcopy
- Tubal Microsurgery for infertility.

Foetal Medicine Provides Diagnosing abnormalities of the baby in the uterus itself which enables us to correct a number of defects before the child is born.







### Ophthalmology

The dept. provides excellent ophthalmic care to all of its patients through experienced professionals and state of art modern equipments. Refractory Corrections, Cataract Surgery and all complicated ophthalmic surgeries are routinely being done.

### Dental & Maxillofacial Surgery

Apart from the routine dental procedures, the department is equipped to Carry prosthetics, Crown and bridge work, Orthodontics, Endodontic procedures, Gum treatment, Oral surgery and maxillofacial surgery.

### Paediatrics & Neonatology

All Complicated paediatric problems are treated and followed up and the Dept. acts as a referall centre for the neighbouring districts.

Well equipped 5 bedded Neonatal Nursery and ICU with radiant warmer & incubator, piped oxygen, ventilators etc. provides excellent newborn care good number of underweight and premature neonates are being saved in the unit.

The department runs well-attended clinics for learning disability and development abnormalities.





## Oncology

### Facilities Include:-

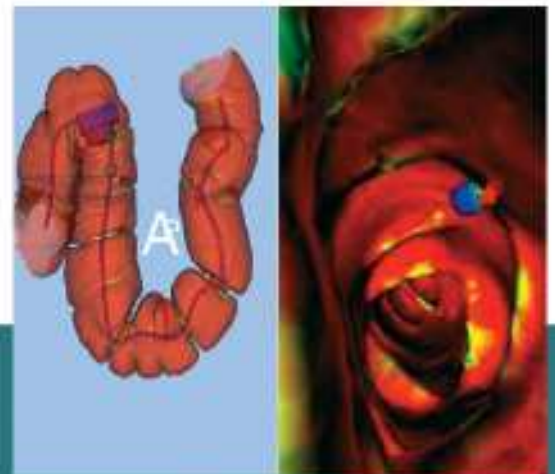
- Daily Outpatient clinics & consultations •
- Day care Chemotherapy • Inpatient Chemotherapy
- Leukemia care for management of cases of acute Leukemia • Lymphoma Clinic • Paediatric Oncology Clinic • Genitourinary Oncology Clinic • Pain and Palliative care services • Head and neck Oncology Clinic • Gastrointestinal Oncology and Laparoscopy Services • Lung cancer Clinic • Breast and Gynaecological Oncology Clinic • Sarcoma and Bone Cancer Clinic • Neuro Oncology Clinic • Advanced well equipped intensive care unit with well trained team of Doctors and Staff • Well equipped allied specialities such as Nuclear Medicine, Pathology & Radiology, led by experienced consultants • 24 hours Oncology casualty services • Psychiatry & Counselling • Cancer screening and risk reduction strategies for prevention.

The department of Oncology offers comprehensive cancer care with its dedicated team of cancer Surgeon, medical Oncologists and radiation oncologists.

## Medical Gastroenterology

Our Gastroenterology department equipped with state of the art equipments and highly trained professionals have all the facilities for the early detection and prompt treatment of all gastro intestinal and hepatobiliary disease.

With the availability of such sophisticated technology as video endoscopy units, upper GI endoscopes, colonoscope and side viewing scope and other gadgets we carry out therapeutic interventions like arresting gastro intestinal bleeding, Biliary duct stone removal, stenting for pancreatic malignancies and lithotripsy.





### Surgical Gastroenterology

The sophisticated equipments in the department includes OLYMPUS Video camera, image intensifier, laparoscope with operating instruments, harmonic scalper etc. The department runs a PROCTOLOGY CLINIC for outpatient treatment of piles.

#### Laparoscopic Procedures:

- Cholecystectomy • Hernia repair • Appendicectomy • Diaphragmatic Repair • Achalasia Cardia • Rectal Prolapse • Adrenalectomy • Colon Surgery

### Joint Replacement , Arthroscopy & Sports Medicine unit

The unit is one of the few centers in the country focusing on arthroscopic surgeries of the shoulder, ankle & wrist apart from the knee joint.

### Nuclear Medicine

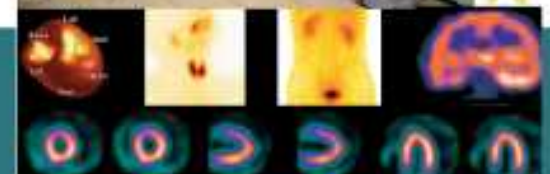
First Nuclear Medicine Center to the North Cochin

A leap in diagnostic imaging science for the FUNCTIONAL EVALUATION of the various organ systems

Equipped with state-of-art GAMMA CAMERA with SPECT imaging

All Procedures are very simple and safe needing just a peripheral IVth injection for the entire scanning procedure.

Well known Diagnostic applications include Split Renal Function, Hydronephrosis Evaluation, Renovascular Hypertension, Renal Scars, Renal Transplant evaluation, VUR, Metastatic Evaluation to bones, Osteomyelitis, Bone Viability, CAD-Evaluation, Myocardial, Viability, Need and Evaluation of Cardiac Revascularization, LV Function, Stroke, Post Operative Brain Tumour Evaluation, GI Bleed Bile Leaks, Hemangiomas, Choledochal Cysts, Thyroid Gland - Morphology and function, Parathyroid adenoma, Pulmonary Embolism etc. Therapeutic applications in Palliation of Bone Pain in Extensive Skeletal Metastases & Radiodine Ablative Therapy for Graves Disease, Toxic Adenomas, Toxic MNGs.





## Neurology

All type of Neurological problems are tackled in our neurology Department

- Neuro Intensive Care Unit with ventilators to look after sick patients with stroke, haemorrhage, LGB, myaesthesia etc.
- 34 Channel digital EEG
- Sophisticated technique like single fibre EMG
- Facilities to have carotid and transcranial Doppler technique to study the cerebral blood flow especially in stroke patients, conventional 4-vessel angiogram, Myelogram and speed X-ray technique to study the disease of nerve system.
- A 20 bedded I.C.U. to cater acute neurological patients.
- The well-equipped Physiotherapy department helps in rehabilitation of neurological patients.

## Neuro Surgery

The department provides care for patients with extensive brain tumour in difficult and inaccessible areas.

### Neurosurgical Procedures

24hrs round the clock neurosurgery for Head injury patients

- Micro-neurosurgery of skull base and posterior fossa
- Micro vascular decompression for trigeminal neuralgia
- Vascular surgery unit, tackling difficult AVM and cerebral aneurysms
- Epilepsy surgery with intra operative monitoring
- Spinal work
- Corpectomy with bone grafting in cervical Spondylosis
- A 20 bedded I.C.U. with all modern monitors and ventilators helps in saving a large number of brain injured patients.





### Nephrology & Renal Transplantations

The department, equipped with state of the art modern computerised hemodialysis machines perform both acetate and bicarbonate haemodialysis and isolated sequential ultra filtration.

The following are some of the procedures we perform in our nephrology unit.

- Equipped for CAVH and CVVH.
- Charcoal haemadsorption treatment for poisoning
- Both maintenance hemodialysis and acute failure patients accepted for dialysis.
- Continuous ambulatory peritoneal dialysis
- Modern dialysis center with capacity to do up to 8 haemodialysis at a time.

### Urology & Andrology

The department caters to a large number of urology patients. Apart from conventional procedures the department has facilities for:

- Renal Transplantation - including cadaver kidney transplantation. The hospital is recognized by the Govt. of Kerala for undertaking Renal Transplantations
- Endoscopic urologic surgery (TURP TURT)
- Laser Surgeries like laser prostatectomy
- ESWL (Extra corporeal shock wave lithotripsy)
- PCNL (Percutaneous nephrolithotomy)
- URS (Ureteroscopy)
- Surgical procedures for erectile dysfunction like penile revascularisation, penile prosthesis
- Laparoscopic Urologic procedures including Orchiopexy for undescended testis, donor nephrectomy for transplantation, pyeloplasty for hydronephrosis etc.





### Emergency & Trauma Care

Enlisting the services of highly qualified full time Consultants in General Surgery, Orthopaedics, Neurosurgery, ENT, Maxillofacial Surgery, Plastic & Reconstruction Surgery, Gastro-Intestinal Surgery, Genito Urinary Surgery and Thoracic Surgery, Westfort Hi-Tech Hospitals has trauma care in the most sophisticated way to handle any type of polytrauma patients and also many patients at a time.

### Medicine

The department of Medicine admits all sorts of general and complicated medical problems. In emergency situation, cross consultation is done with other departments to provide excellent health care. Critical Care services and management of all medical emergencies including hypotension, hypertension, hemorrhagic fever, Asthma, Diabetic, Complication Tuberculosis & PUO are done in Medical Intensive Care unit with Cardiac monitors, Ventilators, Infusion Pumps etc.





## Diabetology

A comprehensive Diabetic Clinic is conducted in the hospital with all modern facilities. The clinic monitors the patients closely to achieve good diabetic control. The patients are seen routinely for detection and prevention of complications of diabetes on the eyes, kidneys, Heart and nervous system. A comprehensive foot care is also undertaken.

## Surgery

Department is well equipped with two modern operation theatres with all monitoring facilities, ventilators and other gadgets. A good number of cases like Thyroid, Breast etc. are undertaken in the department. The surgery department is actively involved in trauma care and provides 24 hour service.

Department is also equipped with a Olympus Endoscope for diagnosis of upper GI disease enables the department for high perfection in diagnosis and management of all general surgical disease.





## Radiodiagnosis and imaging

### X-Rat and Fluoroscopy unit.

- All conventional and Dental Xrays • Urological and Barium GI special investigations.

### Ultrasound

- LOGIQ 500 with 3 probes • High Resolution Sonography for Small Parts like thyroid, breast, testis etc. • Endovaginal Probe Gynaec imaging • Portable service in ICU and OT • Ultrasound guided Biopsy and FNAC • Ultrasound guided aspiration and Drainage • Pseudoaneurysm Occulsion.

### Color Doppler

- Arterial, Venous, Lower Limbs, Carotid, Abdominal, Scrotal and Penile Vascular Doppler Studies

## **Bone Mineral Densitometry (DEXA)**

- 3D Spiral CT Scan • Siemens Somatom Emoticon
- Hi-speed Helical CT. • Round the clock service • Pressure Injector • Laser Camera • CT Angio • 3-D Reconstruction • CD copy of images • CT Guided Biopsies and FNAC
- Angiography and Interventional radiology
- Peripheral, Renal and Cerebral Angiography
- Biopsies and Interventional Procedures.

## Psychological Medicine

- Diagnostic and treatment service for all kinds of neuropsychiatric disorders
- Behaviour therapy for Anxiety, Phobia, Addiction etc. • Psychotherapies • Suicide prevention Clinic • Stress management Clinic
- Child & adolescence guidance Clinic • Psychooncology • Dementia Clinic







### Physical Medicine & Rehabilitation

The department of Physical Medicine & Rehabilitation is the branch of medicine emphasizing the prevention, diagnosis and treatment of disorders particularly those of the musculoskeletal, cardiovascular and pulmonary systems - that may produce temporary or permanent impairment. Physiatry provides integrated care in the treatment of all neurologic and musculoskeletal disabilities from traumatic brain injury to lower back pain. The specialty focuses on the restoration of function to people with problems ranging from simple physical mobility issues to that complex cognitive involvement.

### State of art ultra Modern Equipments

- Digitalised Cardiac Cath Lab
- 2D Echo & Colour Doppler machine
- Computerised Treadmill
- 24 hours Ambulatory ECG Holter Monitor
- Most modern Heart lung Machine
- Ventilators
- ESWL machine for urinary stones fragmentation
- Modern Dialysis units
- Advanced Endoscopic & Laproscopic units
- 34 Channel Digital EEG/single fibre EMG unit
- Ultrasound/Colour Doppler scanner
- Ultramodern 3D Spiral CT Scanner
- State of the art SPECT Gamma Camera for Nuclear Scans
- Wholebody Bone Mineral Densitometer (BMD) using Dual Energy X-ray Absorptiometry (DEXA)
- State of the art Auto Analyzer & Cell Counter.

